



14 Osprey Drive, Scunthorpe, DN16 3EZ

£270,000

Great value detached family home, with three reception rooms and an open plan kitchen with utility the ground floor is perfectly laid out for families that want space. The central hall has doors to the lounge, office, kitchen diner and a downstairs w.c. The kitchen is an open plan place with sliding doors leading to the dining room and French doors lead to the private garden. Upstairs, all four bedrooms are doubles with an en suite on the main bedroom and family bathroom too. Decorated neutrally throughout and available with no chain and vacant possession. Viewings available by appointment, please get in touch to view.

Entrance Hall



First Floor Landing



Lounge 16'11" x 11'8" (5.17 x 3.57)



Bedroom One 11'3" x 11'3" (3.45 x 3.43)



Dining Room 10'4" x 8'2" (3.15 x 2.50)



Kitchen/Diner 16'0" x 13'5" (4.90 x 4.09)



Utility Room 4'10" x 4'5" (1.49 x 1.37)

Downstairs W.C. 5'6" x 3'3" (1.70 x 1.00)

Office 7'1" x 6'9" (2.16 x 2.06)

En Suite 5'5" x 4'2" (1.67 x 1.29)



Bedroom Three 10'6" x 10'4" (3.22 x 3.15)



Bedroom Four 9'8" x 9'5" (2.95 x 2.88)



Bedroom Two 11'8" x 9'9" (3.57 x 2.98)



Family Bathroom 6'7" x 6'5" (2.03 x 1.97)

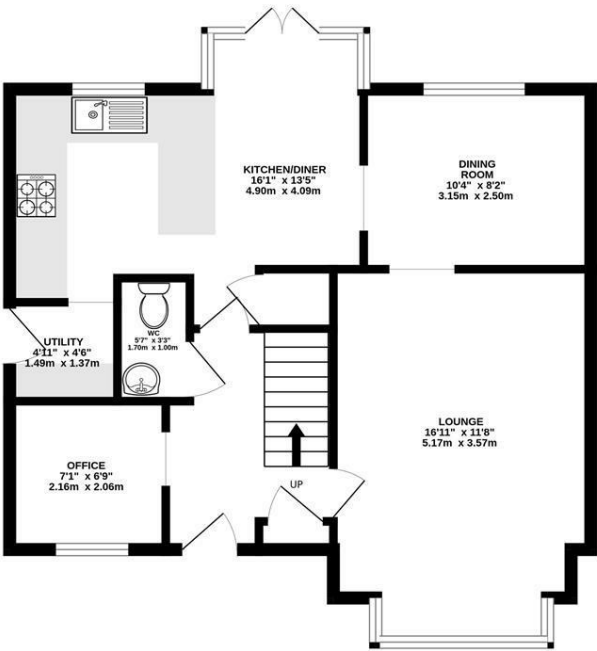


Outside

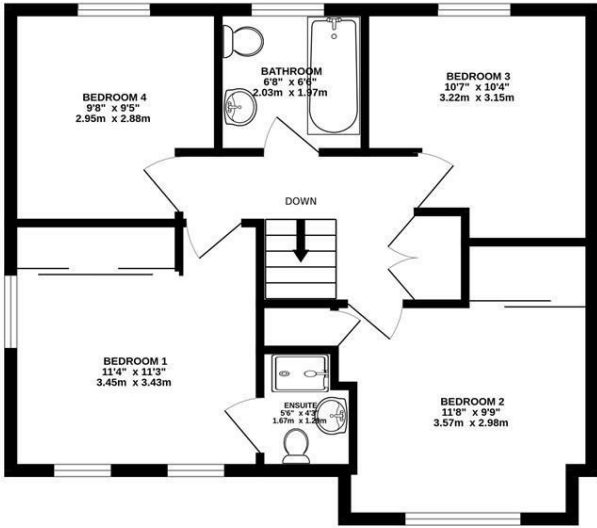


Floor Plan

GROUND FLOOR
610 sq.ft. (56.7 sq.m.) approx.



1ST FLOOR
576 sq.ft. (53.5 sq.m.) approx.

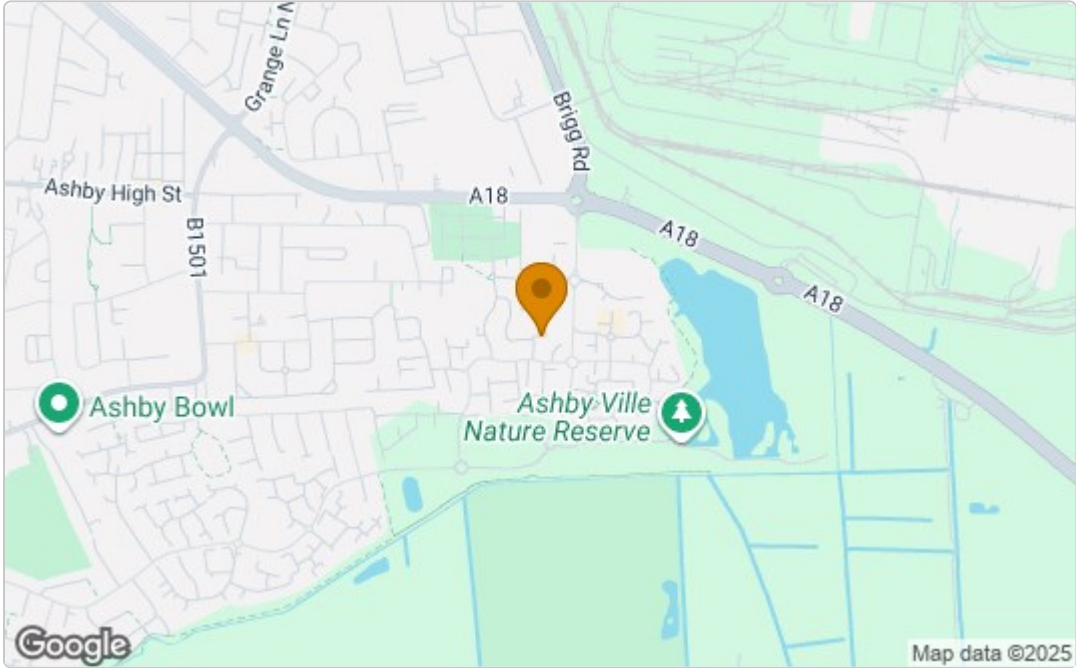


TOTAL FLOOR AREA : 1186 sq.ft. (110.2 sq.m.) approx.

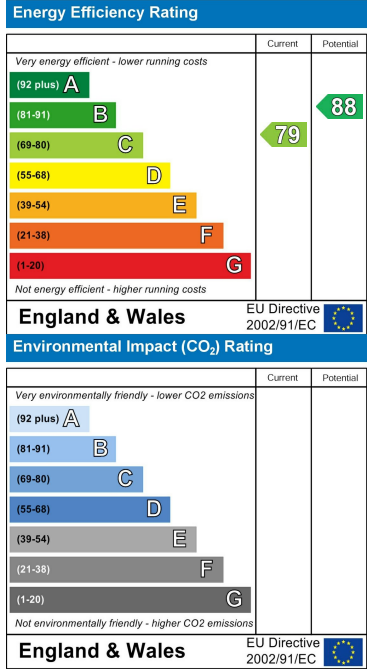
Whilst every attempt has been made to ensure the accuracy of the floorplan contained here, measurements of doors, windows, rooms and any other items are approximate and no responsibility is taken for any error, omission or mis-statement. This plan is for illustrative purposes only and should be used as such by any prospective purchaser. The services, systems and appliances shown have not been tested and no guarantee as to their operability or efficiency can be given.
Made with Metropix ©2025



Area Map



Energy Efficiency Graph



These particulars, whilst believed to be accurate are set out as a general outline only for guidance and do not constitute any part of an offer or contract. Intending purchasers should not rely on them as statements of representation of fact, but must satisfy themselves by inspection or otherwise as to their accuracy. No person in this firms employment has the authority to make or give any representation or warranty in respect of the property.